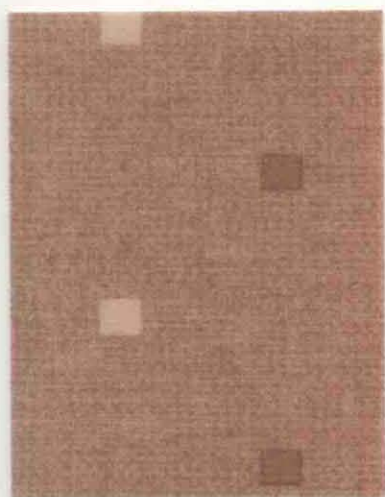
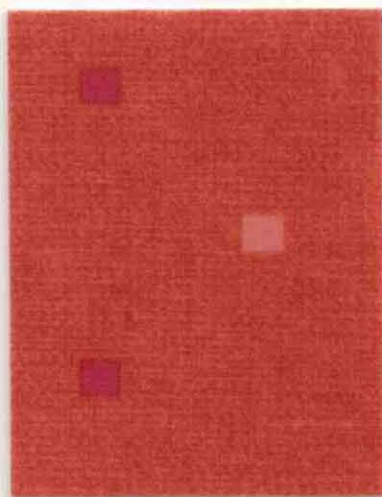


PLAZA - A collection of 12 waterproof textured upholstery fabrics



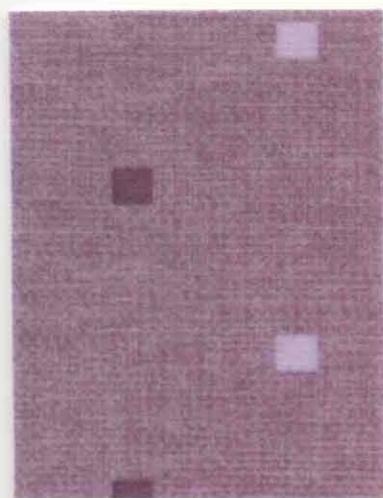
01 - BRAZIL



03 - RUSSET



02 - CHOCOLATE



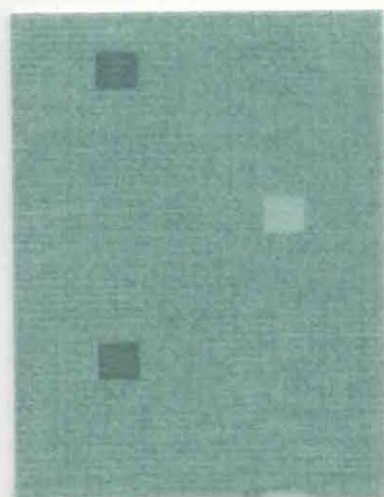
11 - LILAC



05 - CERISE



04 - CLARET



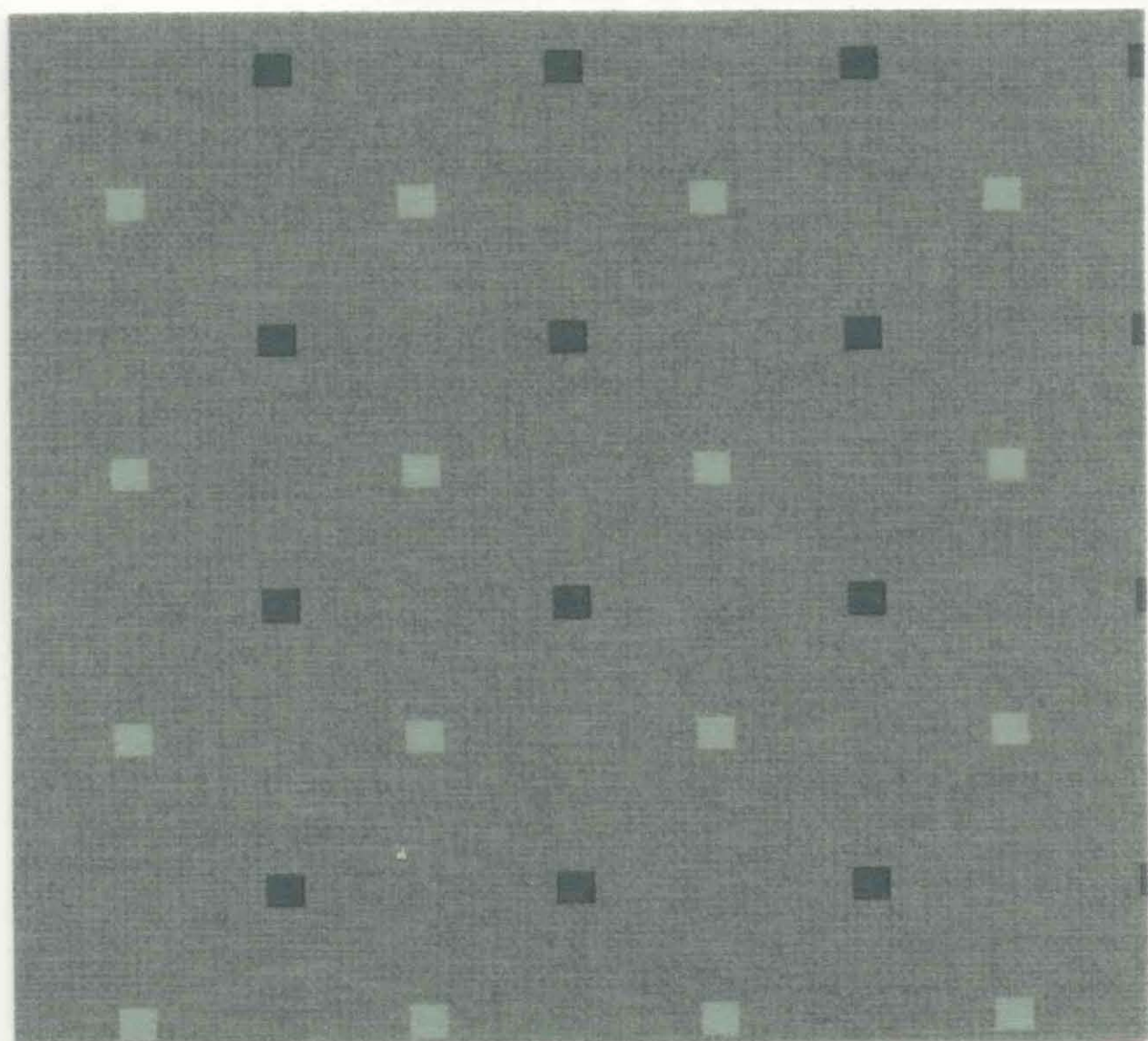
07 - TEAL



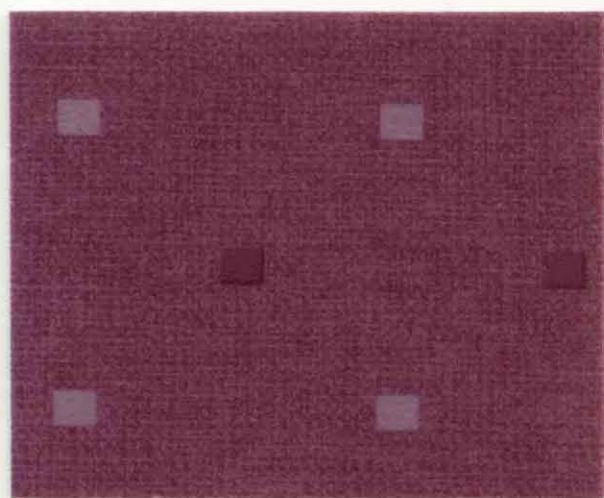
09 - BLUE



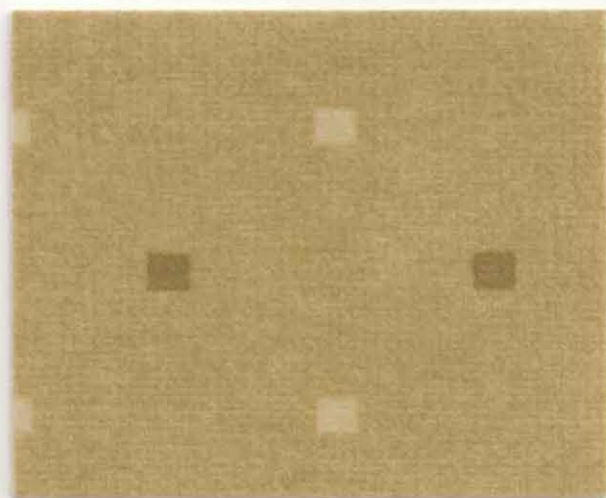
10 - SAPPHIRE



08 - EUCALYPTUS



12 - DAMSON



06 - PISTACHIO

# Plaza

COLLECTION.



## PERFORMANCE FABRIC FOR CONTRACT UPHOLSTERY

---

- WATERPROOF
  - BREATHABLE
  - ANTI-MICROBIAL & ANTI-FUNGAL
  - STAIN RESISTANT
  - EASY CARE
- 

FLAME RETARDANT TO CRIB 5

# Plaza

COLLECTION.

---

- WARM, SOFT TOUCH
  - FLAME RETARDANT TO BS 5852 0, 1, CRIB 5
  - HIGHLY DURABLE
  - WATERPROOF & BREATHABLE
  - ANTI-MICROBIAL & ANTI-FUNGAL
  - GOOD COLOUR FASTNESS
  - EASYCARE STAIN RESISTANT FINISH
  - MARTINDALE 60,000 + RUBS
- 

## TECHNICAL SPECIFICATIONS

|                            |   |                                     |
|----------------------------|---|-------------------------------------|
| Quality                    | UPH/06 and UPH/07 Flexi   |                                     |
| Composition                | Fabric - 100% Polyester   | Back Coating - Acrylic/Polyurethane |
| Width                      | 140cm (55")   |                                     |
| Weight                     | 360gr/m <sup>2</sup> (UPH/06) - 400gr/m <sup>2</sup> (UPH/07 Flexi)   |                                     |
| Waterproof                 | Hydrostatic head BS 3424 > 1 metre  |                                     |
| Upholstery Flame Retardant | These fabrics are back coated conforming to: BS EN 1021-1: 1994, BS EN 1021-2: 1994<br>BS EN 5852: 1990 section 4, ignition source 5 (woodcrib).<br>Test carried out after water soak using CMHR 35 foam  |                                     |
| Abrasion                   | Severe Contract 60000+ Martindale Rubs  |                                     |
| Urea Resistance            | BS 3424 - Part No Deterioration after 24 hours 5.5ph urea soak  |                                     |
| Anti-bacterial/Anti-fungal | Will not support microbial growth including:<br>- Aspergillus Niger<br>- E.Coli<br>- Altinata<br>- Salmonella<br>- Penicillium<br>- Staphylococcus Aureus<br>- Cladosporium Herbarism   |                                     |
| Care and Maintenance       | <ol style="list-style-type: none"><li>1 Routine soap and warm water sponging is effective for ordinary soiling.</li><li>2 Fresh stains both water and oil based are easily removed using most water based household spray cleaning agents.</li><li>3 Antiseptic cleaning agents can be used and more stubborn stains may require a safe solvent such as Isopropyl Alcohol or Mineral Spirit.</li><li>4 A half cup of household bleach for 5 litres of water can also be used as a useful disinfectant.</li><li>5 Best cleaning method is 'wipe and dry' technique. Full immersion is not recommended.</li><li>6 Do not dry clean.</li></ol> |                                     |

NB: We cannot guarantee an exact shade match against samples or between production batches, slight variations are inevitable with the print process and on the different base cloths.  
Due to legislation, test methods and standards, specifications may differ from the above, please refer to our price list or call the sales desk for confirmation of the most current specifications